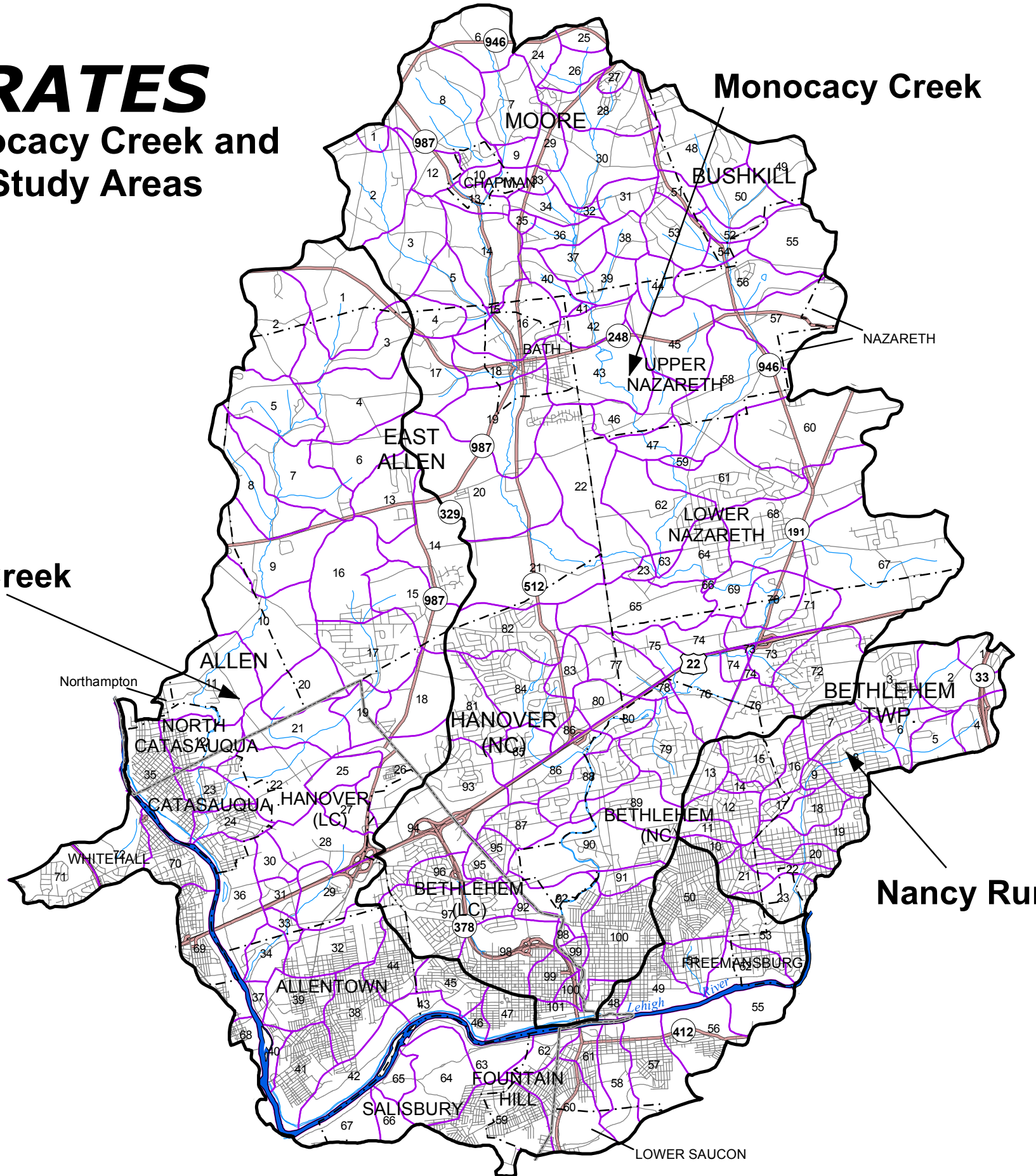


MAP 3 RELEASE RATES

Catasauqua Creek, Monocacy Creek and Nancy Run Act 167 Study Areas



- 23 Subarea Boundaries
- Watershed Boundaries
- County Boundaries
- Municipal Boundaries
- Streams/Rivers
- Major Roads
- Minor/Other Roads

RELEASE RATE SUMMARY TABLES

Dual Release Rate Categories (30/-) define a 30% Release Rate for the 2-Year storm and the indicated Release Rate for the 10-, 25- and 100-Year storms

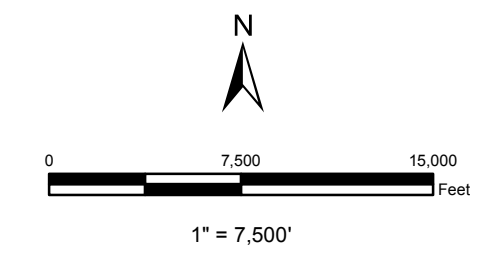
CATASAUQUA CREEK STUDY AREA			
Subarea	Release Rate (%)	Subarea	Release Rate (%)
1 - 8	30/100	44	30/100
9 - 12	30/CND I*	45	30/CND I*
13 - 21	30/100	46 - 49	30/CND II*
22 - 24	30/CND I*	50 - 51	30/100
25 - 33	30/100	52 - 58	30/CND II*
34	30/CND I*	59 - 60	30/100
35 - 37	30/CND II*	61	30/CND I*
38 - 39	30/100	62 - 70	30/CND II*
40 - 43	30/CND II*	71 - 72	30/100

MONOCACY CREEK STUDY AREA			
Subarea	Release Rate (%)	Subarea	Release Rate (%)
1 - 3	30/90	53	30/80
4	30/80	54	30/60
5	30/70	55	30/80
6	30/100	56	30/60
7	30/80	57 - 62	30/50
8	30/90	63 - 72	30/100
9 - 11	30/80	73 ^A	30/100
12	30/90	73 ^B	30/PND*
13 - 16	30/70	74 ^C	30/100
17	30/80	74 ^D	30/PND*
18 - 22	30/50	75	30/100
23 - 25	30/100	76 ^A	30/100
26 - 28	30/90	76 ^B	30/PND*
29 - 36	30/80	77	30/100
37	30/70	78 - 79	30/PND*
38	30/80	80 ^E	30/100
39 - 42	30/70	80 ^F	30/PND*
43	30/50	81 - 85	30/100
44	30/80	86 ^E	30/100
45 - 47	30/50	86 ^F	30/PND*
48	30/100	87 - 92	30/PND*
49	30/90	93 - 94	30/100
50	30/70	95 - 96	30/90
51	30/80	97	30/80
52	30/70	98 - 101	30/PND*

^A Area East of Rt. 191
^B Area West of Rt. 191
^C Area East of Rt. 191 or North of Rt. 22
^D Area Between Rt. 191 & Rt. 22
^E Area North of Rt. 22
^F Area South of Rt. 22

NANCY RUN STUDY AREA			
Subarea	Release Rate (%)	Subarea	Release Rate (%)
1	30/100	10 - 11	30/100
2 - 3	30/90	12	30/90
4	30/100	13 - 14	30/70
5	30/80	15	30/60
6	30/60	16 - 23	30/50
7 - 9	30/50		

*Conditional/Provisional No Detention Areas do not need detention controls for the 10-, 25-, or 100-Year storms, provided that adequate downstream capacity can be shown for increased peak flows. (See Plan Update for additional details.)



Source: Lehigh Valley Planning Commission

LEHIGH VALLEY PLANNING COMMISSION
 961 Marcon Boulevard, Suite 310
 Allentown, PA 18109-9368
 (610) 264-4544

